

Responsible sourcing

# Sedex SMETA

The world's most widely used social audit

LRQA

## The Sedex Members Ethical Trade Audit (SMETA) is an audit that can help you understand standards of labor, health and safety, environmental performance and ethics within your business and supply chain.

Developed by Sedex, a global membership organization, SMETA audits are designed to help protect workers from unsafe conditions, being overworked, discrimination, low pay and forced labor.

The final outcomes of the audit are clear and concise, helping to drive corrective action in the form of a Corrective Action Plan. It also allows suppliers to share one audit report with multiple stakeholders, saving time on duplication.

Conducting approximately 18,000 social and environmental audits per year, LRQA has been a member of the Sedex Associate Auditor Group for more than twelve years. LRQA has been awarded the Sedex Responsible Business award – the only audit firm to receive the honor, and the only company to have received the award twice.



## Why choose a SMETA audit?

- **Full transparency**  
across the supply chain
- **Identify and prioritise the risks**  
within your supply chain against legal and ethical requirements, that may not be obvious
- **Drives improved performance**  
A Corrective Action Plan helps to resolve risks and improve overall supplier performance
- **Comply with legislation**  
Enable compliance with existing upcoming legislation.



# 2-pillar or 4-pillar audit?

## SMETA 2-pillar audit:

1. Labor standards
2. Health and Safety

The mandatory pillars of any SMETA audit are the labor standards and health and safety modules. Management systems, entitlement to work, subcontracting and homeworking and a shortened environmental assessment are looked at as additional elements.

## SMETA 4-pillar audit:

This is a full SMETA audit and includes the same modules as a 2-pillar audit with the addition of:

3. Environmental assessment (*extended*)
4. Business Ethics

## → Why choose a 2-pillar audit?

The 2-pillar audit is a great start to your auditing journey and can help overcome challenges within your supply chain.

## → Why choose a 4-pillar audit?

The 4-pillar audit is suitable for those that have extensive environmental management requirements as well as want to look at business practices within their supply chain.



# What is the process of a SMETA audit?

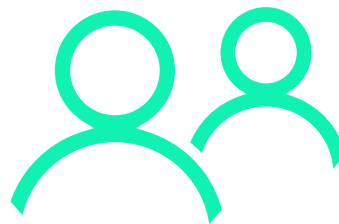
## Audit preparation

- **Pre-audit questionnaire**
- **Opening meeting** – with management taking place on-site. Details of the audit and the procedure, define any requirements.
- **Audit documents** – Prior to the audit, pre-prepare. E.g. – licences, contracts etc.



## Audit

- **Site tour** – auditors conduct a site tour observing conditions against the requirements of the standard.
- **Interviews** – Auditors can conduct private interviews with all employees involved in on-site practices.
- **Review documents** – all documents supplied will be reviewed to ensure compliance.



## Completion

- **Closing meeting** – management will be informed of the audit findings and sign a **Corrective Actions Plan Report**.



## Frequently asked questions

What is the difference between SMETA and Sedex?

**The Supplier Ethical Data Exchange (Sedex) is a global membership organization aiming to manage and improve working conditions in global supply chains. The Sedex Members Ethical Trade Audit (SMETA) is the audit methodology designed to help protect workers from unsafe conditions, overwork, discrimination, low pay, and forced labor.**

Do I have to be Sedex member to share my SMETA audit with clients?

Yes, only members are permitted to have a full SMETA audit or follow-up.

**My clients have requested a SMETA audit, what do I do next?**

Get in touch [with our technical](#) experts, who will guide you through the process.

# Why work with LRQA?



## Global capability

We're everywhere you are. With highly qualified auditors worldwide, we can provide a local service, including SMETA, with a globally consistent dedication to excellence.



## A history of firsts

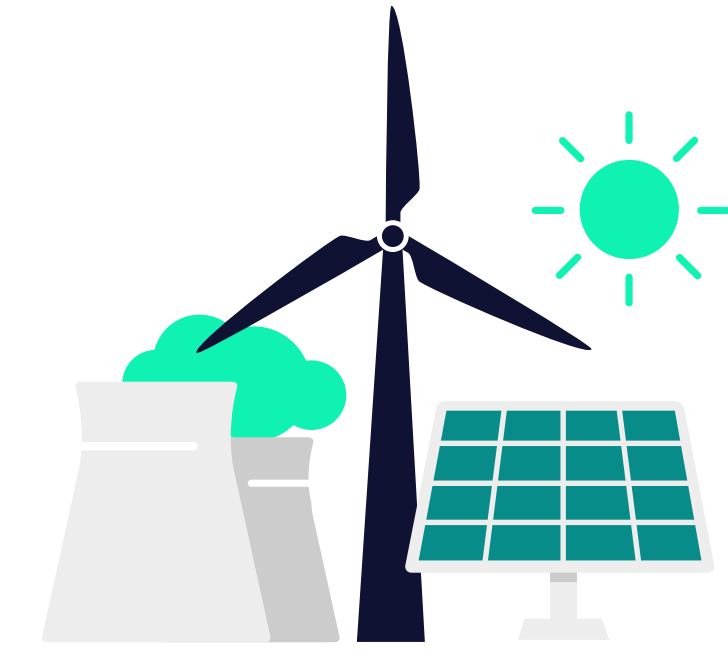
We were first to receive accreditation to deliver certification services for a range of quality, environmental, and health and safety standards across the globe. And we continue to be instrumental in developing a variety of specific standards across different sectors, including responsible sourcing.



## Flexible delivery

In many cases, our services can be delivered on-site or remotely using safe and secure technology.

By blending face-to-face and digital methodologies we create a service delivery model to best support your needs.



## Sustainable focus

With over 20,000+ audits carried out every year, we are one of the world's largest ESG specialists.

We have developed the world's first end-to-end supply chain ESG due diligence platform, incorporating unique proprietary data that is verified from the ground up.

The  
right  
way

## About LRQA:

By bringing together unrivalled expertise in certification, brand assurance, cybersecurity, inspection and training, we've become a leading global assurance provider.

We're proud of our heritage, but it's who we are today that really matters, because that's what shapes how we partner with our clients tomorrow. By combining strong values, decades of experience in risk management and mitigation, and a keen focus on the future, we're here to support our clients as they build safer, more secure, more sustainable businesses.

From independent auditing, certification and training; to technical advisory services; to real-time assurance technology; to data-driven supply chain transformation, our innovative end-to-end solutions help our clients negotiate a rapidly changing risk landscape – making sure they're shaping their own future, rather than letting it shape them.

## Get in touch

Visit [www.lrqa.com/us](http://www.lrqa.com/us) for more information, email [inquiries-usa@lrqa.com](mailto:inquiries-usa@lrqa.com)



LRQA  
2101 Citywest Blvd., Suite 100  
Houston, TX 77042  
United States

Care is taken to ensure that all information provided is accurate and up to date; however, LRQA accepts no responsibility for inaccuracies in or changes to information.  
For more information on LRQA, click [here](#). © LRQA Group Limited 2023

LRQA

YOUR FUTURE. OUR FOCUS.