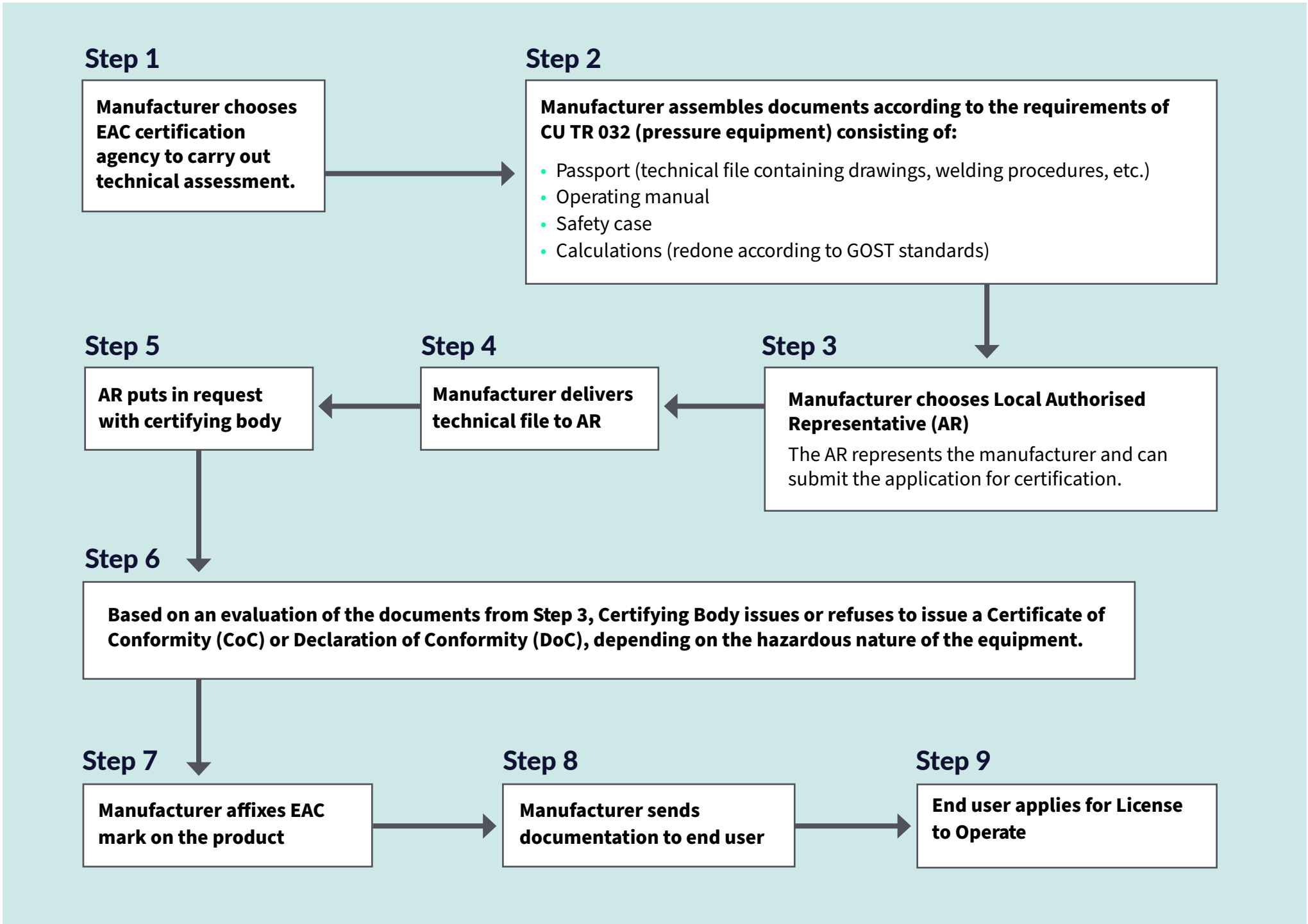


Eurasian Conformity (EAC) Certification Process

For manufacturers exporting to Kazakhstan, Kyrgyzstan, and Armenia

Manufacturer’s process to obtain EAC CU TR 032 (pressure equipment) certification



Top 5 most frequently used guidelines for industrial manufacturers:

Low Voltage
CU TR 004

Machinery Safety
CU TR 010

Equipment for use in potentially explosive areas
CU TR 012

EMC
(Electro-magnetic compatibility)
CU TR 020

Pressure Equipment
CU TR 032



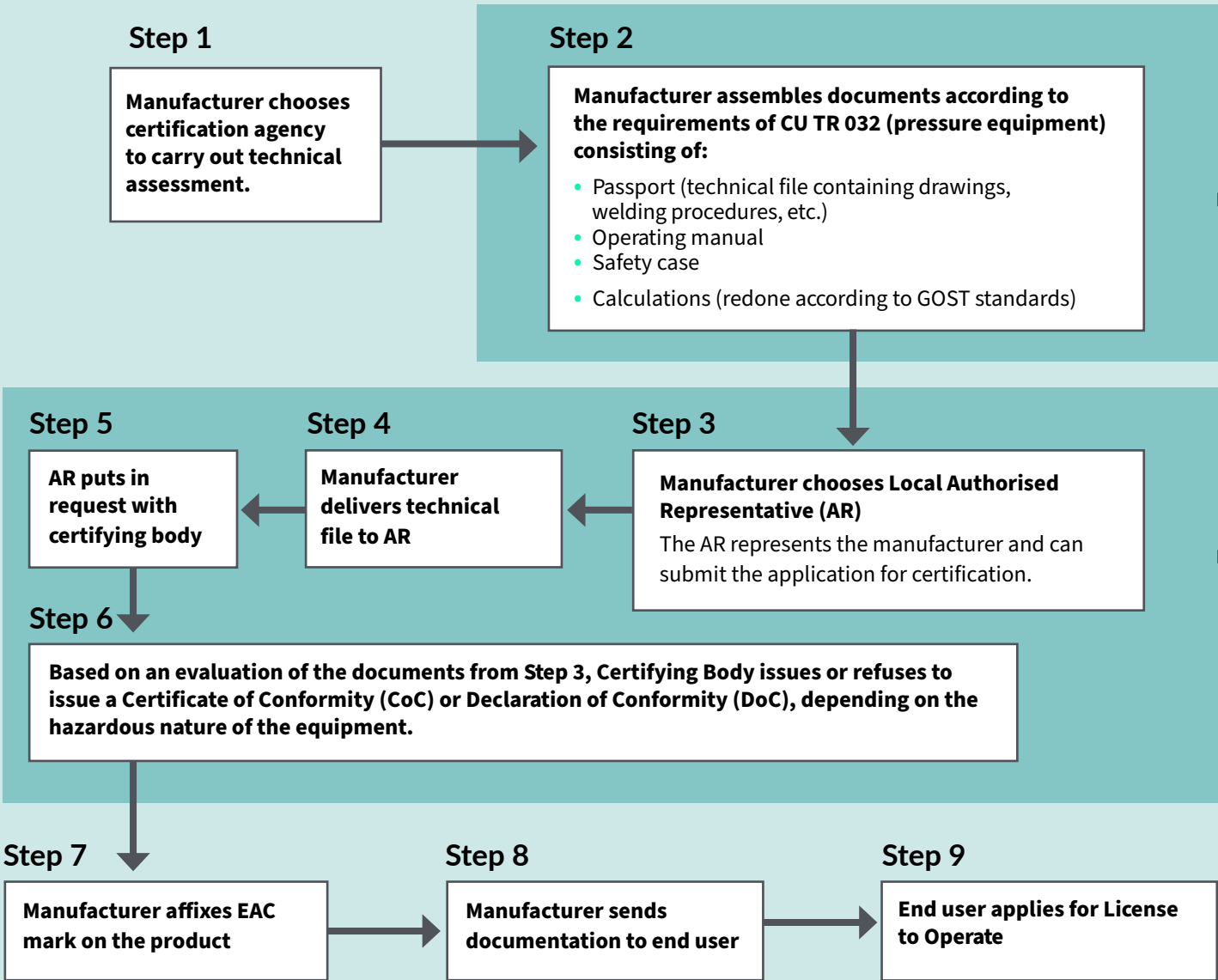
To find out how LRQA can help you, visit www.lrqa.com, email info-usa@lrqa.com or call +1 866 971 LRQA

Care is taken to ensure that all information provided is accurate and up to date; however, LRQA accepts no responsibility for inaccuracies in or changes to information. For more information on LRQA, visit www.lrqa.com/entities. © LRQA Group Limited 2022.

Eurasian Conformity (EAC) Certification Process

For manufacturers exporting to Kazakhstan, Kyrgyzstan, and Armenia

Manufacturer's process to obtain EAC CU TR 032 (pressure equipment) certification

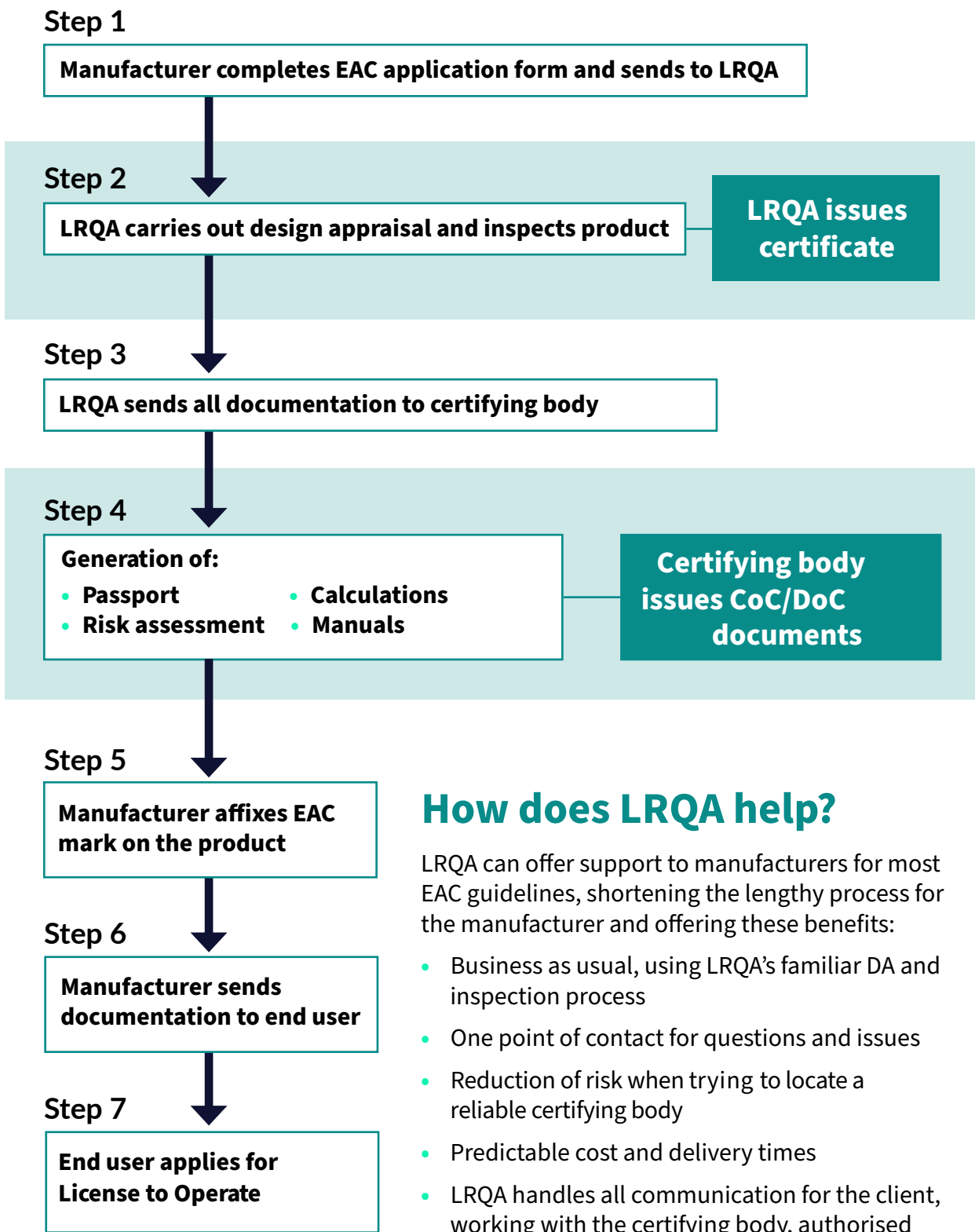


Top 5 most frequently used guidelines for industrial manufacturers:



LRQA can offer support to manufacturers for most EAC guidelines.
In some cases a combination of more than one guideline may be applicable. If this is the case, other documentation may be required.

Manufacturer's process to obtain EAC CU TR 032 (pressure equipment) certification via LRQA



How does LRQA help?

LRQA can offer support to manufacturers for most EAC guidelines, shortening the lengthy process for the manufacturer and offering these benefits:

- Business as usual, using LRQA's familiar DA and inspection process
- One point of contact for questions and issues
- Reduction of risk when trying to locate a reliable certifying body
- Predictable cost and delivery times
- LRQA handles all communication for the client, working with the certifying body, authorised representative and testing laboratories



To find out how LRQA can help you, visit www.lrqa.com, email info-usa@lrqa.com or call +1 866 971 LRQA